

ZOWER 中沃

www.firesafetydoor.com



RELIABLE
OEM&ODM
PROFESSIONAL

ZOWER 中沃 Protect Safety
& Security



WOODEN DOOR



CONTENTS

01	COMPANY INFORMATION	2
02	WOODEN FIRE DOOR	7
	PRODUCT STRUCTURE	7
	WOODEN FRAME WOODEN LEAF FIRE DOOR	14
	STEEL FRAME WOODEN LEAF FIRE DOOR	18
	Door surface treatment	20
	PVC PLASTIC LAMINATE	22
	Wood Veneers	24
	HPL	28
	MELAMINE LAMINATED FINISH	28
	PU PAINTING	30
	PRIMED DOORS	32
03	INTERIOR WOOD DOOR	40
04	HARDWARE PARTS	46
05	PACKAGING&PRODUCTION LINE	48
06	PROJECT PORTFOLIO	52

COMPANY INFORMATION

Henan Zhongwo Fire Science and Technology Co., Ltd, founded in 2009, is a rapid expanding manufacturing company in fire door industry. After 10 years development Zowor has become a leading fire doors manufacturer all over China. Our products range from steel fire doors, wooden fire doors, wood interior doors, WPC doors and villa doors. Quality and service has been and also will be our core competitiveness. We are always keeping good cooperation relationship with many high-end real estate builders such as Green Garden and Evergrand and many research institutes such as the Architectural Design and Research Institute of Henan Province. And we have always been enjoying good reputation around our partners domestically and internationally.

Zowor places great emphasis on technical exploration and development. We set up a specialized technical panel with members having more than 8 years of R&D experiences in fire door industry for development of new products and technology. Their commitment enable our company to launch more than 5 patents a year. In October 2019 we were honored as “Model Production Base of Door Systems with Low K-value” of China National Key R&D Plan “Green Buildings and Industrialization of Buildings” in China 13th Five-year planning.

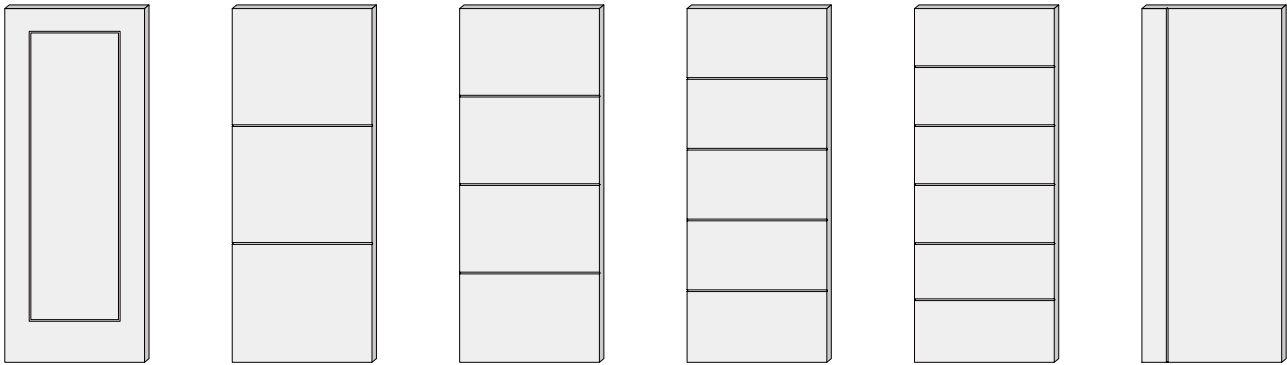


OUR CLIENTS

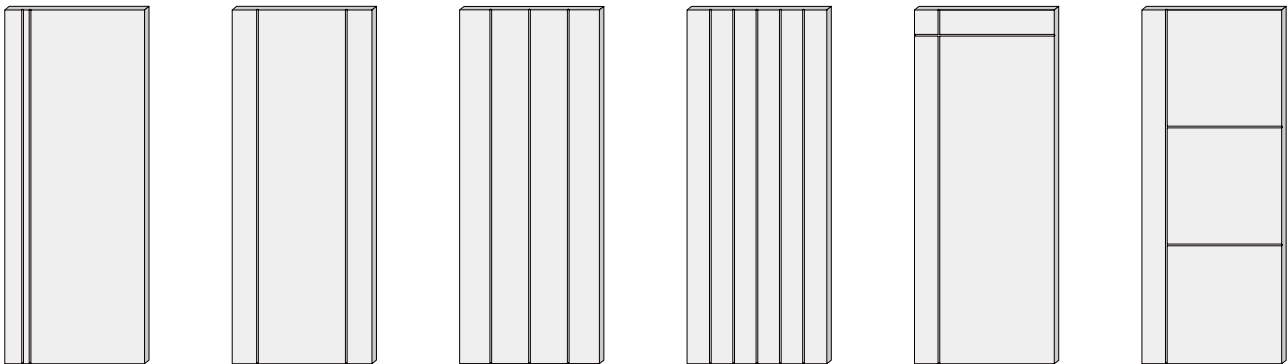




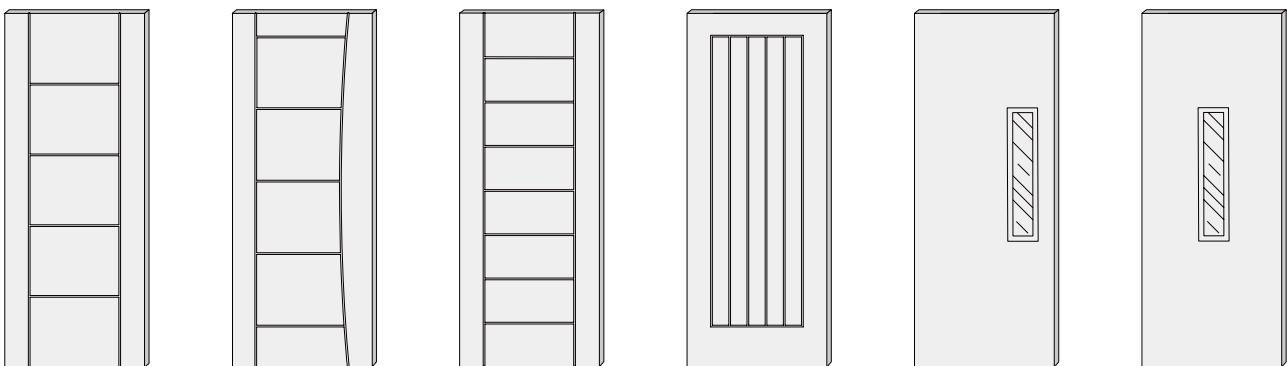
DOOR DESIGN OPTIONS



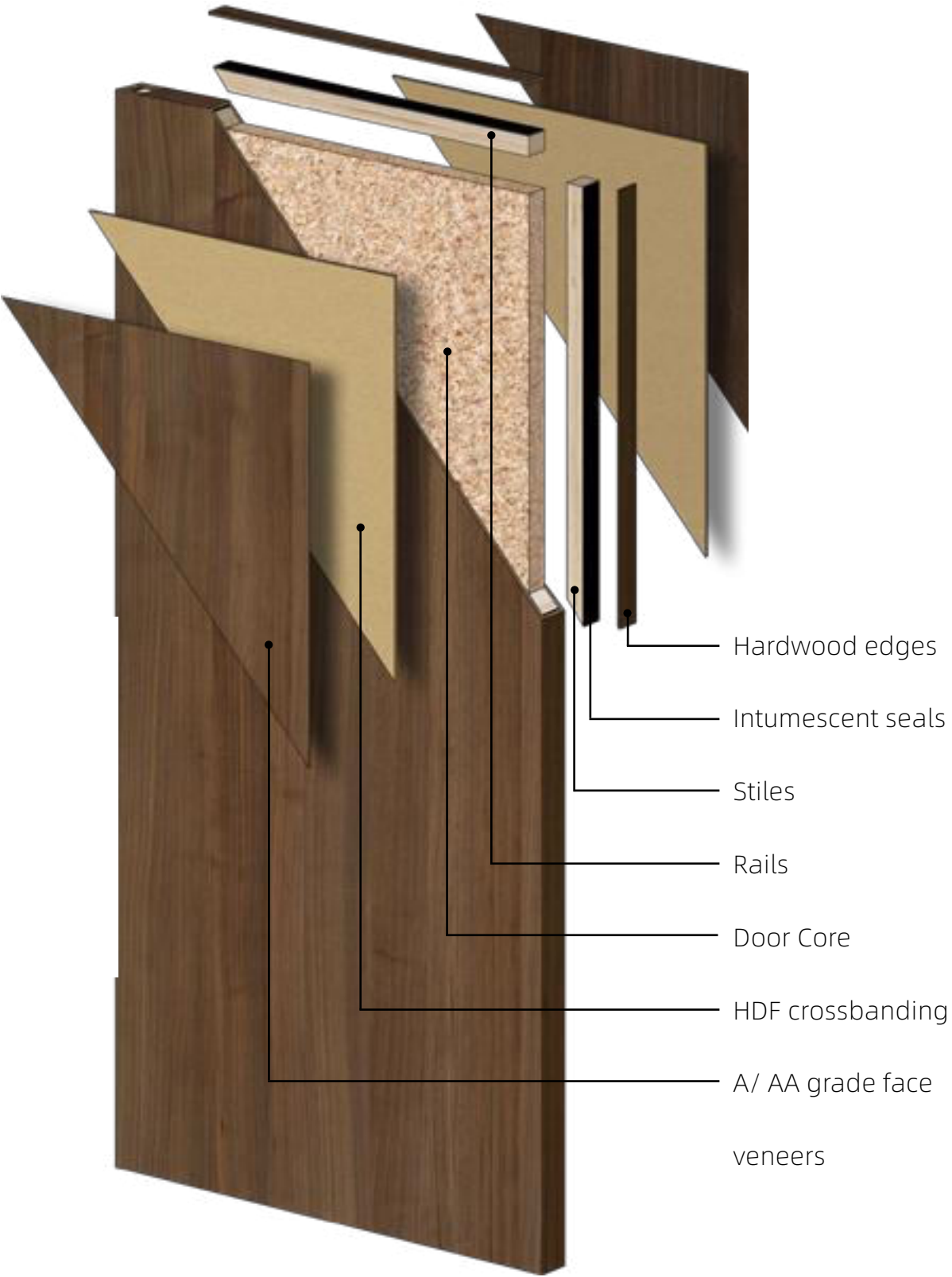
01 02 03 04 05 06



07 08 09 10 11 12



13 14 15 16 17 18



TYPICAL WOOD FRAME DESIGN



Drywall double rabbet jamb with
2 sides adjustable casings



Drywall single rabbet jamb with
1 side adjustable casing



Drywall outside flush jamb
with in-swing door



Concrete wall with shadow gap
feature +Single rabbet jamb with
1 side adjustable casing



Drywall wall with shadow gap
feature +Single rabbet jamb
with 1 side adjustable casing



Drywall with shadow gap
feature +Double rabbet
jamb

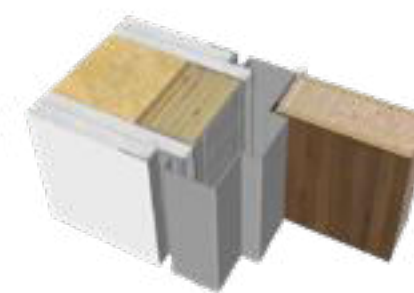


Hidden door with wall panel

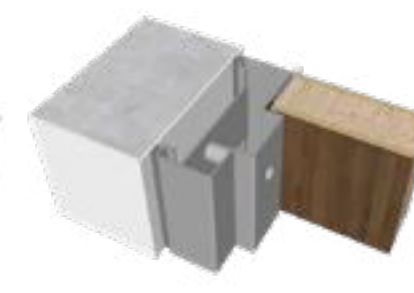
TYPICAL METAL FRAME DESIGN



Drywall
Hollow metal frame KD or
welded



Drywall with shadow gap
feature +Hollow metal frame KD
or welded



CMU wall
Hollow metal frame with
dimpled anchor

STAIN COLOR OPTIONS

COLOR
OPTIONS



CL-01



CL-02



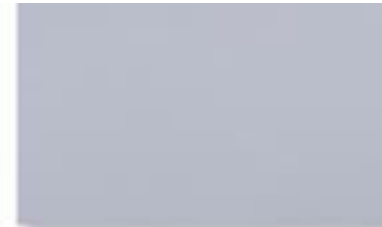
CL-03



CL-13



CL-14



CL-15



CL-04



CL-05



CL-06



CL-16



CL-17



CL-18



CL-07



CL-08



CL-09



CL-19



CL-20



CL-21



CL-10



CL-11



CL-12



CL-22



CL-23



CL-24

* Zowor offers customized paint or stained color options, and don't hesitate to contact our sales representatives for more information.

// WOODEN FRAME WOODEN LEAF FIRE DOOR

WOODEN FRAME WOODEN LEAF SINGLE DOOR



- Certified with UL/NFPA/EN/BS
- 20 minutes up to 90 minutes fire rating
- Single Door customized Max Size: 4*8 feet
- Available with handle lock



A001



A002



A003



A004

SINGLE DOOR
WOODEN FRAME



A005



A006



WOODEN FRAME WOODEN LEAF DOUBLE DOOR

- Certified with UL/NFPA/EN/BS
- 20 minutes up to 90 minutes fire rating
- Double Door customized Max Size: 8*8 feet
- Available with panic bar



B002



B003



B001



B004



B005

// STEEL FRAME WOODEN LEAF FIRE DOOR

STEEL FRAME WOODEN LEAF SINGLE DOOR



- Certified with UL/NFPA/EN/BS
- 20 minutes up to 90 minutes fire rating
- Single Door customized Max Size: 4*8 feet



C001



C002



C003



C004



C005



C006

STEEL FRAME
SINGLE DOOR



STEEL FRAME WOODEN LEAF DOUBLE DOOR

- Certified with UL/NFPA/EN/BS
- 20 minutes up to 90 minutes fire rating
- Double Door customized Max Size: 8*8 feet
- Available with panic bar



D002



D003



D001

DOUBLE DOOR STEEL FRAME



D004

// DOOR SURFACE TREATMENT

PVC PLASTIC LAMINATE

Plastic laminate doors offers a limitless creative license for your design interior with a resilient and strong material.

Choose from solid colors or patterns to achieve a unique or bold statement. Or choose a wood grain material to achieve consistency in appearance from door to door.



E001



E002

PVC PLASTIC LAMINATE

This is the right choice when uniformity and heavy use applications are required. Plastic laminate is extremely tough, holding up to daily bumps and scratches.

Plus, being less porous than veneer, this surface is easier to clean. Imagine every door you spec matching exact grain and color and holding up to years of wear and tear.

WOOD VENEERS

Wood veneer is a natural material that provides beauty, warmth and, most of all, variety. Each piece is unique, with nature producing individual shapes and colors within the same tree.

A great choice for classic or modern design, Zowor Door provides any commercially available wood veneer, including various species: birch, maple, oak, cherry, walnut, mahogany, and more.



F001



F002



F003

Wood veneers are available in multiple grades, matches, and assemblies to meet design requirements, including domestic and exotic selections. Common veneer cutting methods include plain sliced or flat cut, quarter sliced, rift cut, and rotary.

AVAILABLE IN MULTIPLE GRADES
GREAT CHOICE



F004

HPL

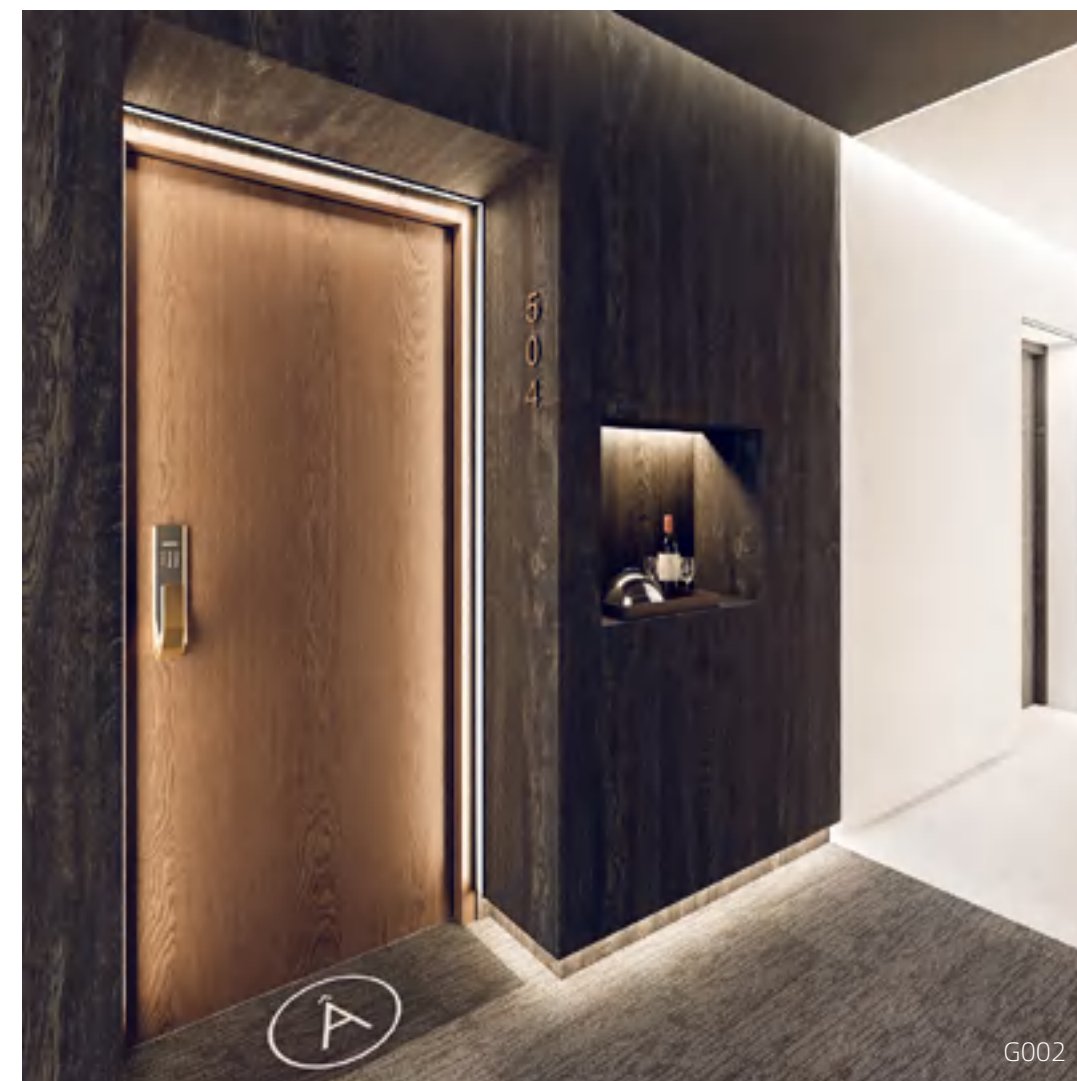
HPL is a durable and hard-wearing material that is commonly used for surfacing wood doors. It consists of multiple layers of resin-impregnated paper that are bonded together under high pressure and heat. This process creates a strong and durable surface that is resistant to scratches, abrasion, and impact.

There are several advantages of HPL surface treatment on wood doors:

Durability: HPL is highly resistant to scratches, impact, and abrasion, making it an ideal surface treatment for high-traffic areas such as commercial buildings, hospitals, and schools.



G001



G002

Low maintenance: HPL is easy to clean and requires minimal maintenance, making it an excellent choice for doors in public spaces or areas that require frequent cleaning. Design options: HPL is available in a wide range of colors, patterns, and finishes, including wood grain, matte, glossy, and textured, giving designers and architects a lot of flexibility to create the desired aesthetic.

Moisture & Waterproof Resistance: HPL laminates are manufactured with additional layers of plastic sheets to make it waterproof. This feature is another advantage for the users to install the HPL at the surface areas where the moisture level is usually high. It is resistant to humidity and moisture suitable for spaces highly exposed to such an atmosphere.

MELAMINE LAMINATED FINISH

A melamine laminated door is a type of door made by laminating a thin layer of melamine paper onto a substrate material, typically MDF (medium-density fiberboard). The melamine paper is impregnated with melamine resin, which makes it durable, scratch-resistant, and easy to clean.

Melamine laminated wood fire doors have several surface treatment advantages, including:

Durability: The melamine laminate surface is highly durable and resistant to scratches, dents, and other types of damage. This makes them ideal for use in high-traffic areas where wear and tear are common.



Moisture resistance: The melamine laminate surface is also moisture-resistant, making it ideal for use in damp areas such as bathrooms and kitchens.

Easy to clean: The smooth surface of melamine laminated wood fire doors is easy to clean and maintain. They can be wiped down with a damp cloth, making them ideal for areas that require frequent cleaning.

Cost-effective: Compared to solid wood fire doors, melamine laminated wood fire doors are more affordable, making them an excellent choice for those on a tight budget.

Environmental friendly: Melamine laminated wood fire doors are made from recycled materials, and the manufacturing process involves minimal waste, making them an eco-friendly option.



PU PAINTING

PU is one of the most commonly used paint for door production. It has excellent comprehensive properties, such as: good construction performance, filling, fullness, hardness, ease of sanding, scratch resistance, all have good performance. PU paint is the most popular choice for wooden door painting.



It is easy to understand by the name of this coating in which a colour topcoat. The base and natural colour of wood can't be visible. One can pick any colour for its topcoat. PU coating finishes come in matte and High Gloss.

PRIMED DOORS

Before being painted, wood has to be primed first. Priming is a specific paint which seals the wood and increases adhesion to the finishing coats of paint. And as their names suggest, primed internal doors (occasionally referred to as pre-primed doors) have already received this base coat of primer in the factory. Can you paint straight onto primed doors? Indeed, you can.

Primed doors are ready to be painted the minute they've arrived. Now: White primed internal doors are the most common. This means the primer is white, allowing you to choose any colour that matches your door.

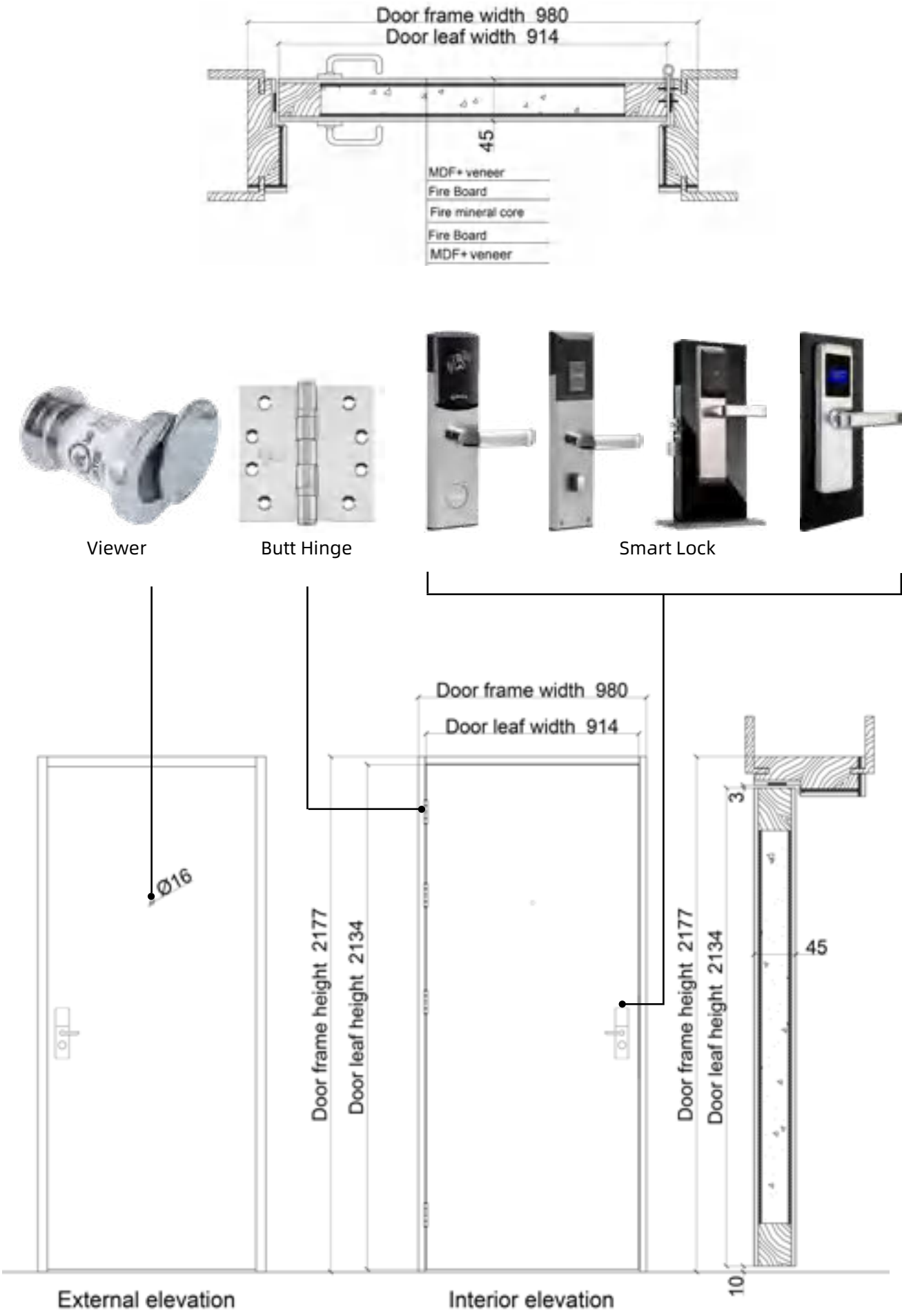


Primed doors are ready to be Normally primed doors could have 2 option of coating . UV Primer coated surface and Water-based primers . They both are eco-friendly .



FOR MORE INTRODUCTION

A unique door design that will transform your home into a highly distinctive space.





Blend the updated feel of contemporary design with more traditional details.



L002



L004



L005



L006



L003



L007



L008



L009

Functionality and refine style are combined in modern doors with an amazing range of aesthetic characteristics.



L010

OFFER
MORE CHOICE



L011



L012



L013

INTERIOR Wood Door



MDF Sticks



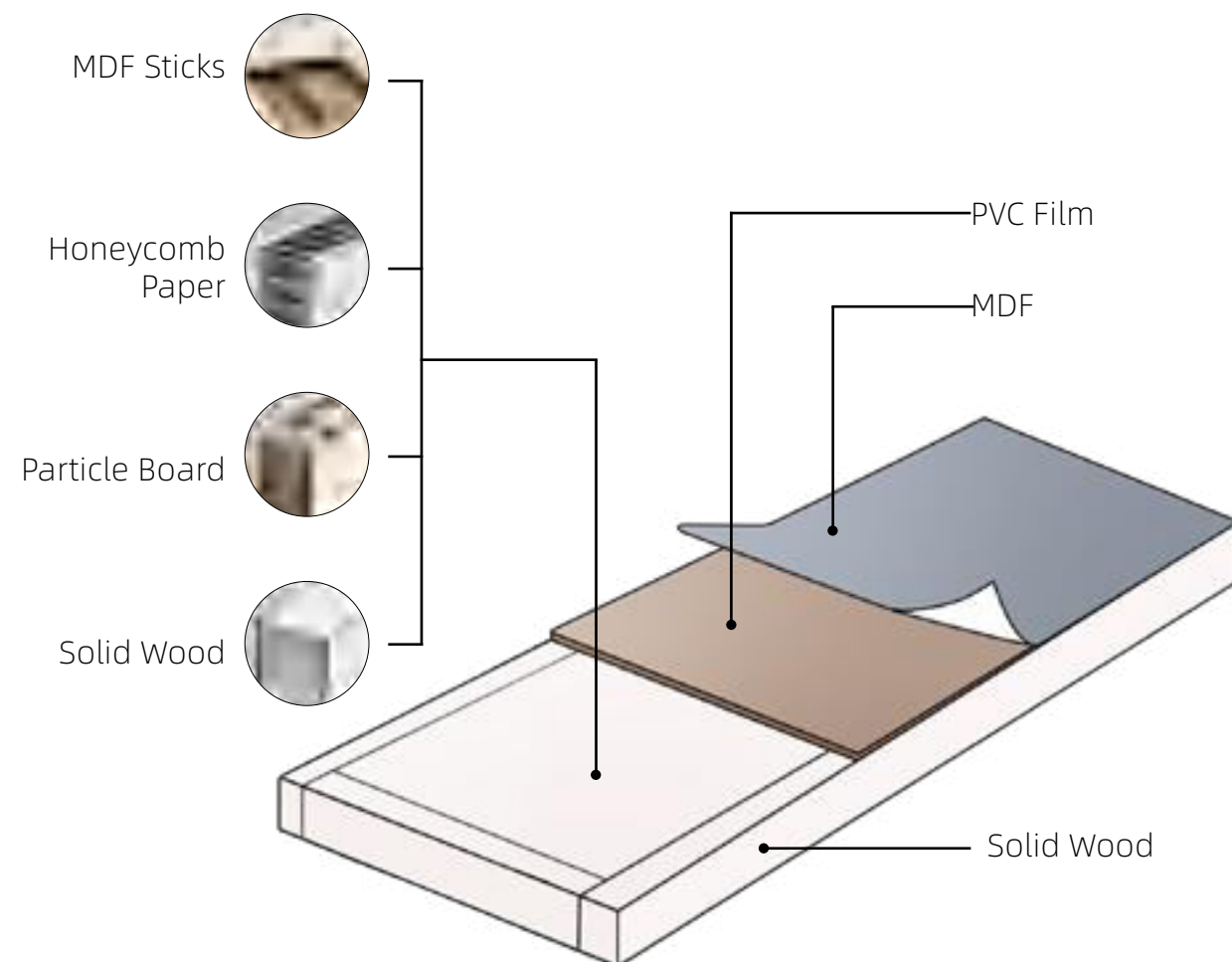
Honeycomb Paper



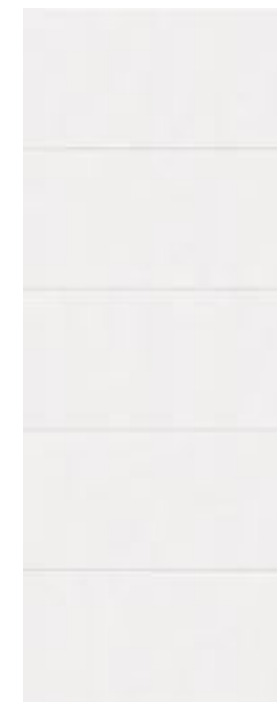
Particle Board



Solid Wood



M001



M002



M003



M004



M005



INTERIOR



N008



N009



N010



> DOOR



Hardware Parts



Handle-1



Handle-2



Handle-3



Handle-4



Mortise Lock-1



Mortise Lock-2



Cylinder-1



Cylinder-2



Cylindrical lock-1



Cylindrical lock-2



Mortise Lock-1



Mortise Lock-2



Mortise lock-3



Viewer



Butt Hinge-1



Spring Hinge-2



Smart Lock-1



Smart Lock-2



Smart Lock-3



Smart Lock-4



Closer-1



Closer-2



Closer-3



Closer-4



Lever trim-1



Lever trim-2



Lever trim-3



Concealed hinge



Bottom seal



Magnetic door holder



Pull & push



Push Bar



Coordinator-1



Coordinator-2



Flush bolt

PACKAGING&PRODUCTION LINE

PACKAGING

Moisture-proof, dust-proof and shock-proof package meets requirements of long-distance transport and open storage.



Storage of finished doors

Package for the products: Plastic foam+Bubble wrap +Strong carton(optional).



PRODUCTION LINE

such as automatic sheet metal
break machine, CNC machine,
painting & coating line.



Factory has passed ISO9001:2015 quality
management systems.

Our main product: Wooden fire rated
door, steel fire door & window, Shutter.

